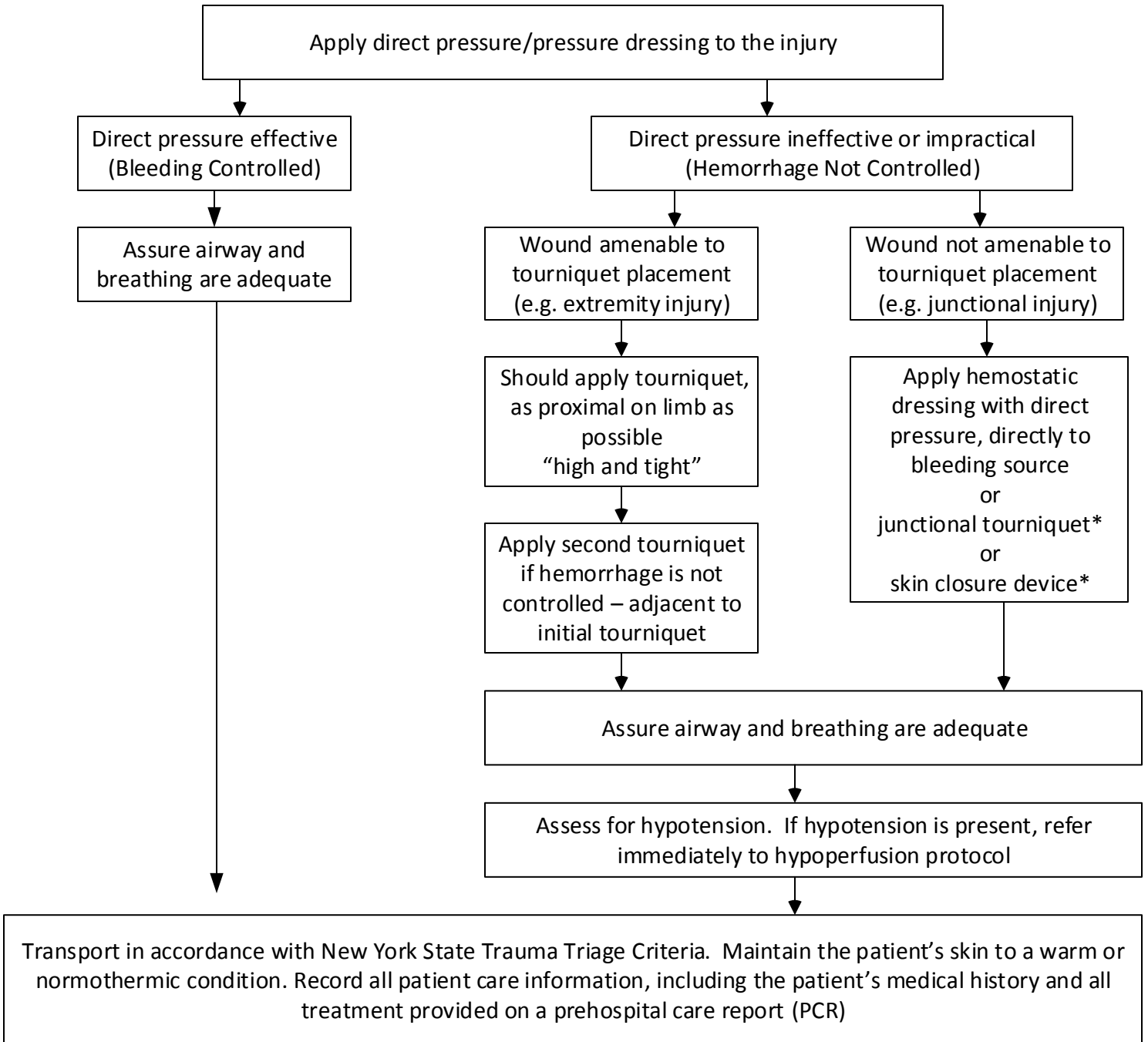


Prehospital Bleeding/External Hemorrhage Control Protocol



*** Regional option may include the use of Junctional Tourniquet and/or cutaneous closure devices in accordance with directions for its use, and Medical Director authorization.**

If a tourniquet is placed, an alert patient may require narcotic analgesia to manage tourniquet-associated discomfort. Consider use of regionally approved pain management protocols including ALS intercept.

Hemodialysis access sites may result in life threatening hemorrhage. Direct digital pressure should be used first followed by tourniquet in the setting of life threatening hemorrhage when other means of hemorrhage control have been unsuccessful.